



Halstead Blvd

Railroad

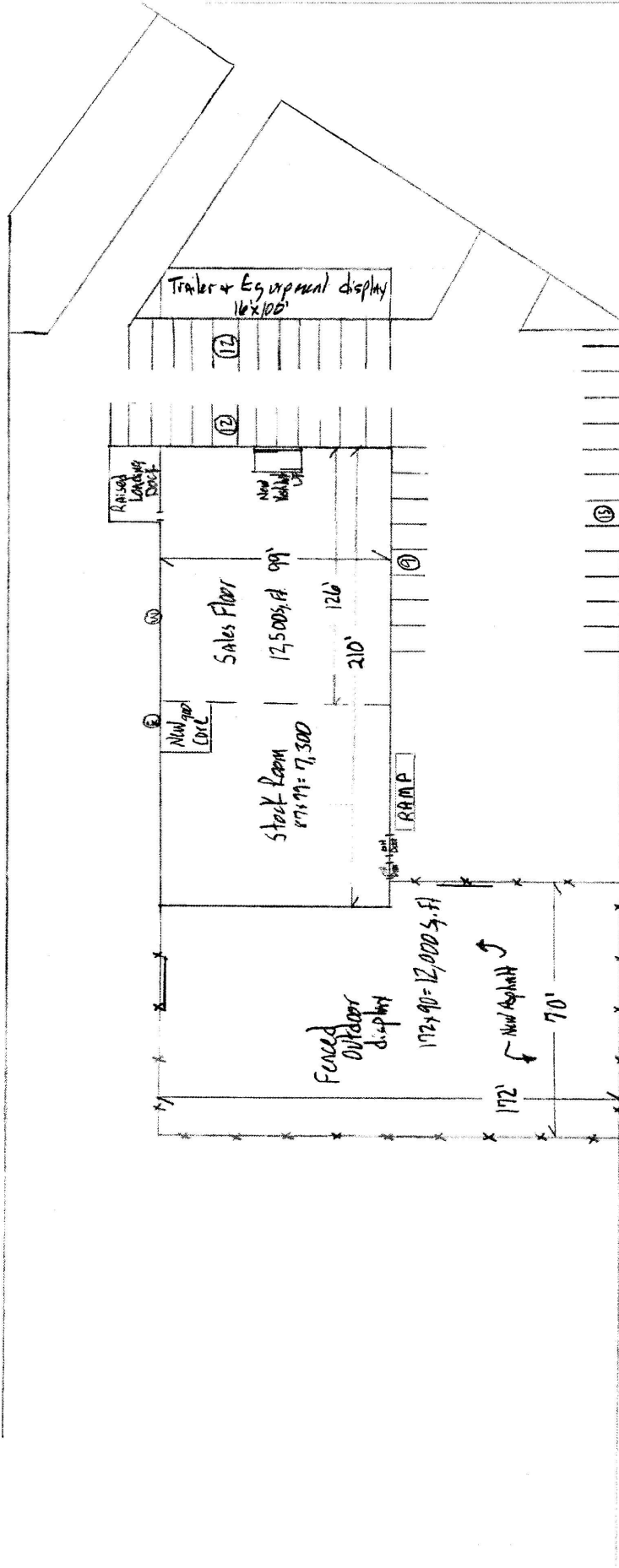
XXX

N

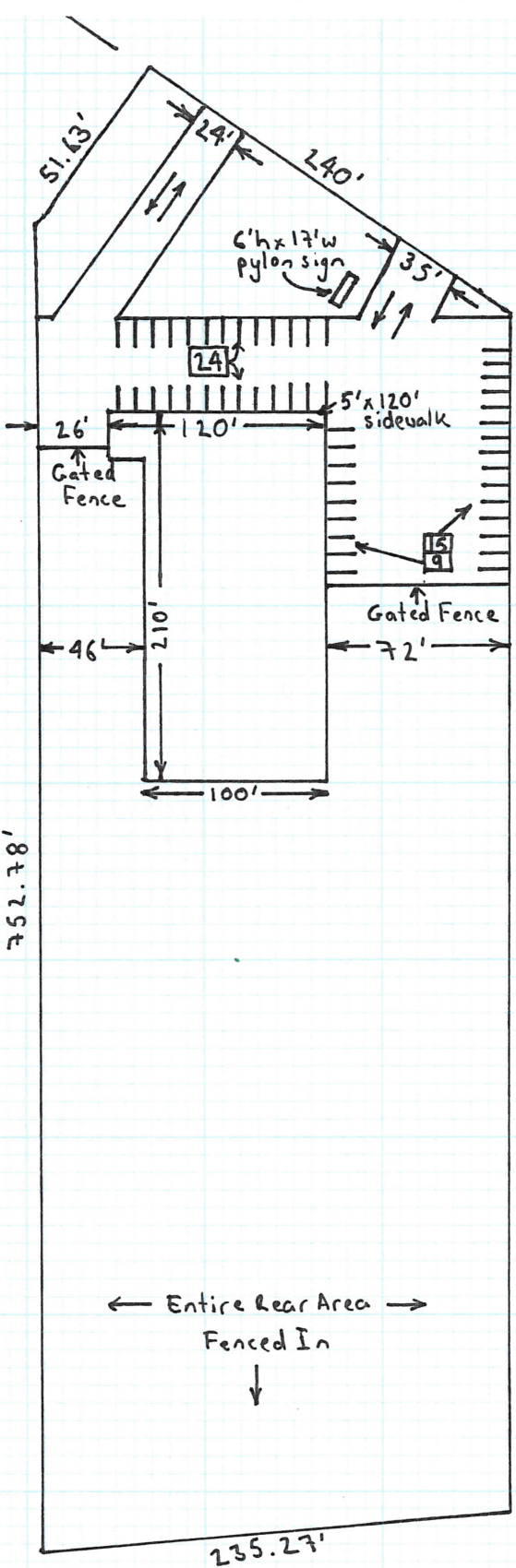
= 87 feet

Elizabeth City, NC

1-11-10

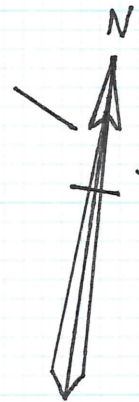


Sales Floor - 12,500 sq. ft.
Stack Room - 7,300 sq. ft.
CORE - 900 sq. ft.
Trailer & Equipment - 1,600 sq. ft.
Fenced Outdoor display - 12,000 sq. ft.

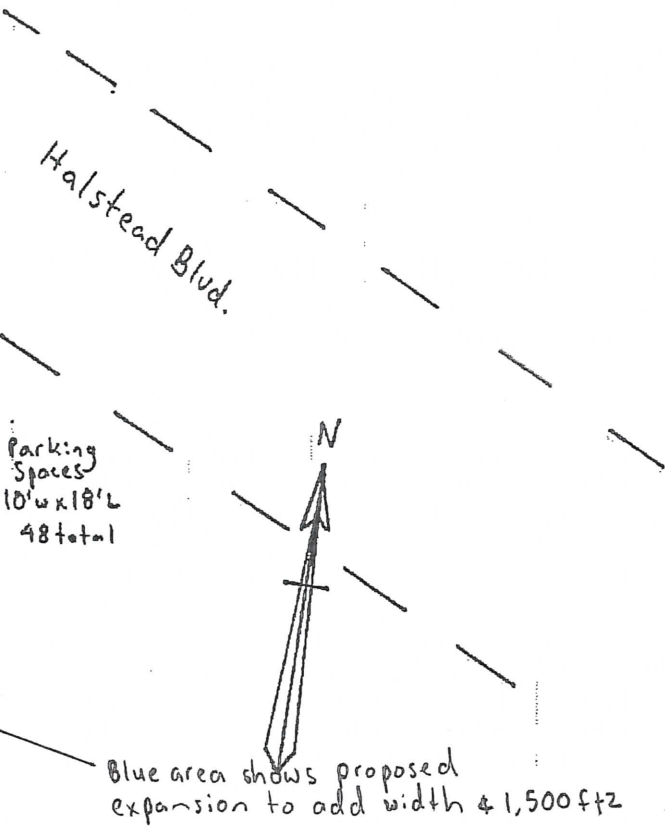
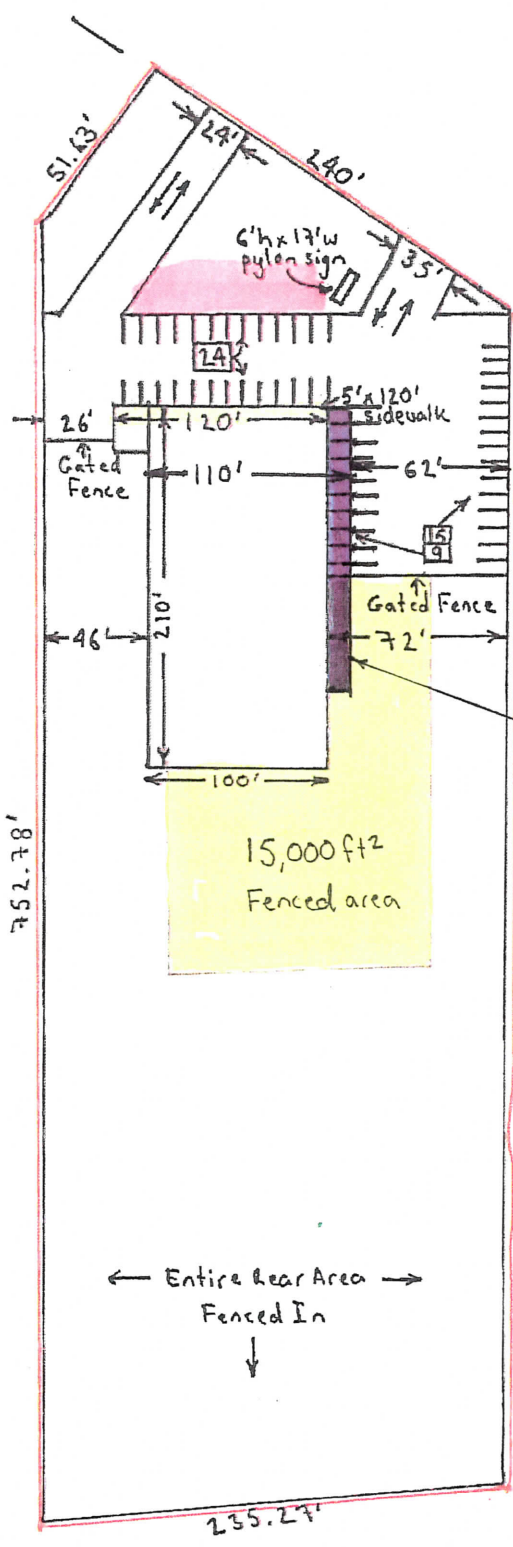


Halstead Blvd.

Parking Spaces
10'w x 18'L
48 total



1111 Halstead Blvd
Elizabeth City, NC

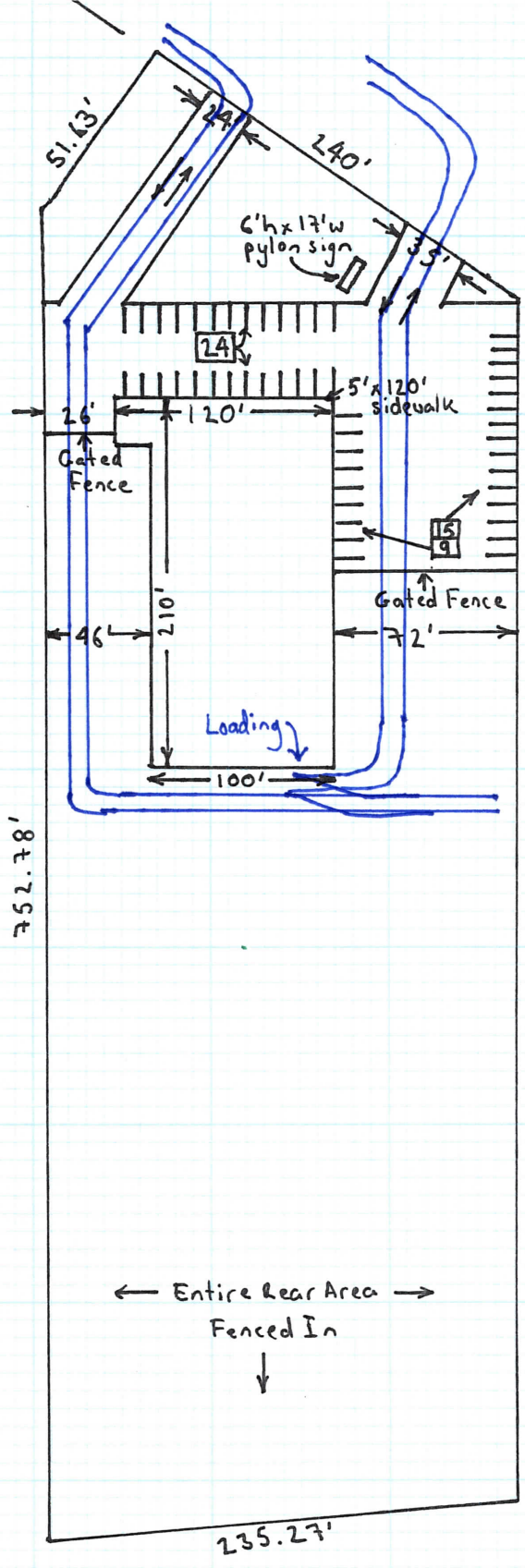


1111 Halstead Blvd
Elizabeth City, NC

← Entire Rear Area →
Fenced In
↓

APPROVED
L. *[Signature]* 3/29/10
DATE
T. *[Signature]*
DATE
12/14/09

WB-65 Truck Path
 (Site should accommodate any of the truck patterns)



Parking Spaces
 10'w x 18'L
 48 total



Halstead Blvd.

1111 Halstead Blvd
 Elizabeth City, NC