

Pasquotank County Property Card

(click [HERE](#) for previous version)

PIN: 891305293079

MAP: 72-E-7D

Deed Book: 1338 / Deed Page: 175 / Date: 20190612

Location: 01409 W CHURCH ST

STEVENS, RONALD JAMES
2212 W CHURCH ST

ELIZABETH CITY, NC 27909

Acct: 0014072

Estimated County Tax: \$1829.52
Estimated City Tax: \$1556.28

	Prior Evaluation Year: 2006	Current Evaluation Year: 2014
Land	\$66200	\$66200
Use Land	\$0	\$0
Building	\$79900	\$171400
Total	\$146100	\$237600
Assessed	\$146100	\$237600



Notes
BLDG ADDED ON TO = YE BLT 2005 KEYS
LOCKSMITH SHEAR HEAVEN MARTINI
PAINTING OTHERS

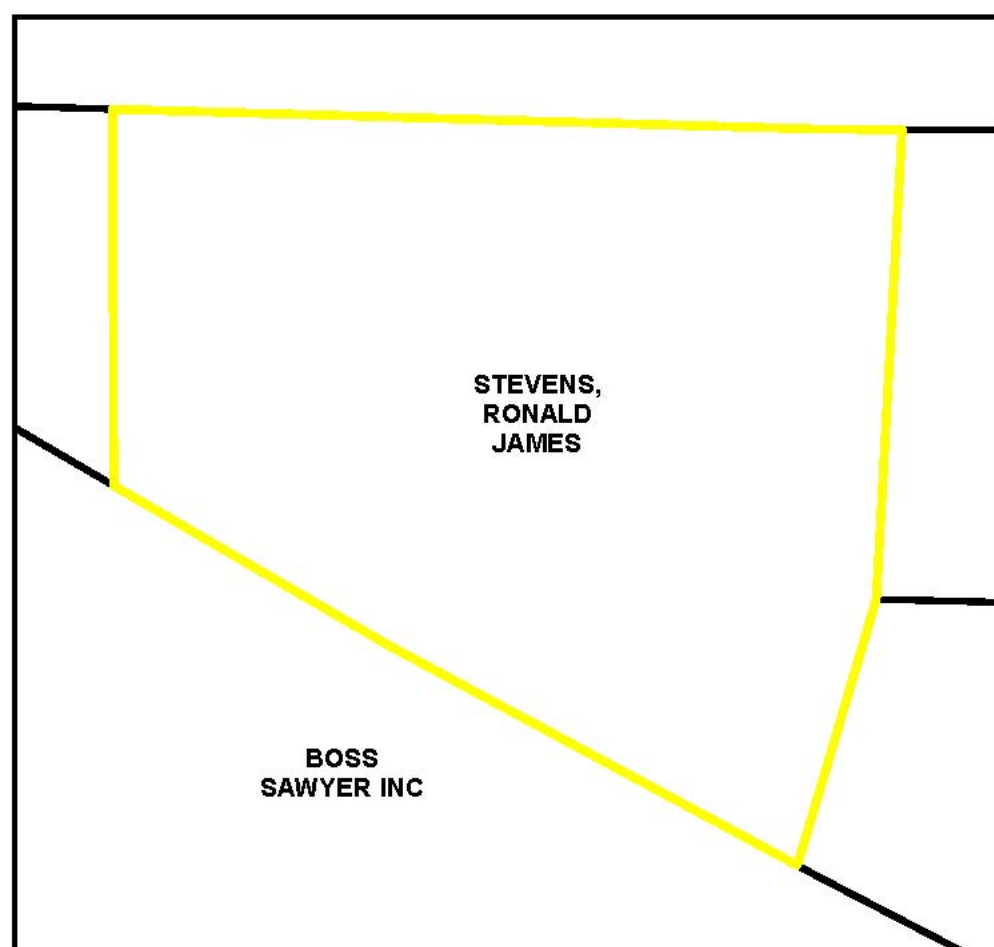
Click on any thumbnail for a full size map.

[Pasquotank Interactive GIS Map](#)

Aerial Map

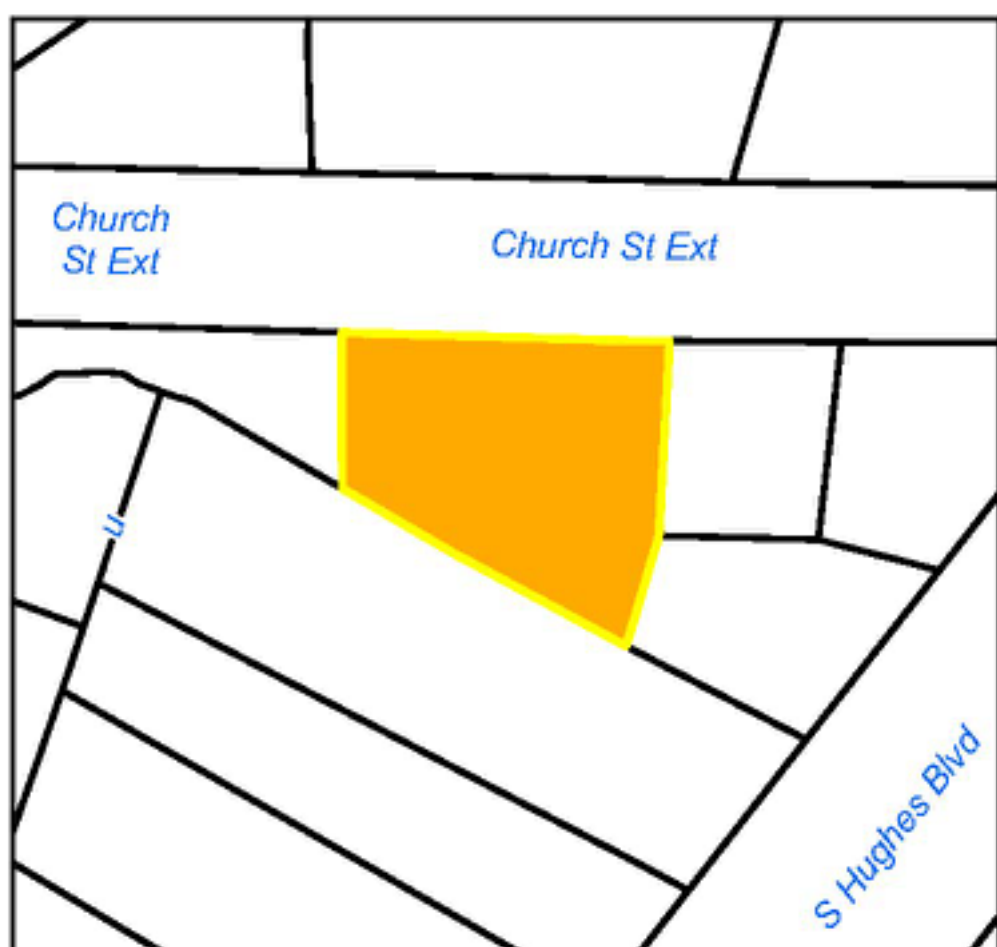


891305293079 Aerial 72-E-7D



891305293079 Deeds/Neighbors 72-E-7D

Nearby Sales



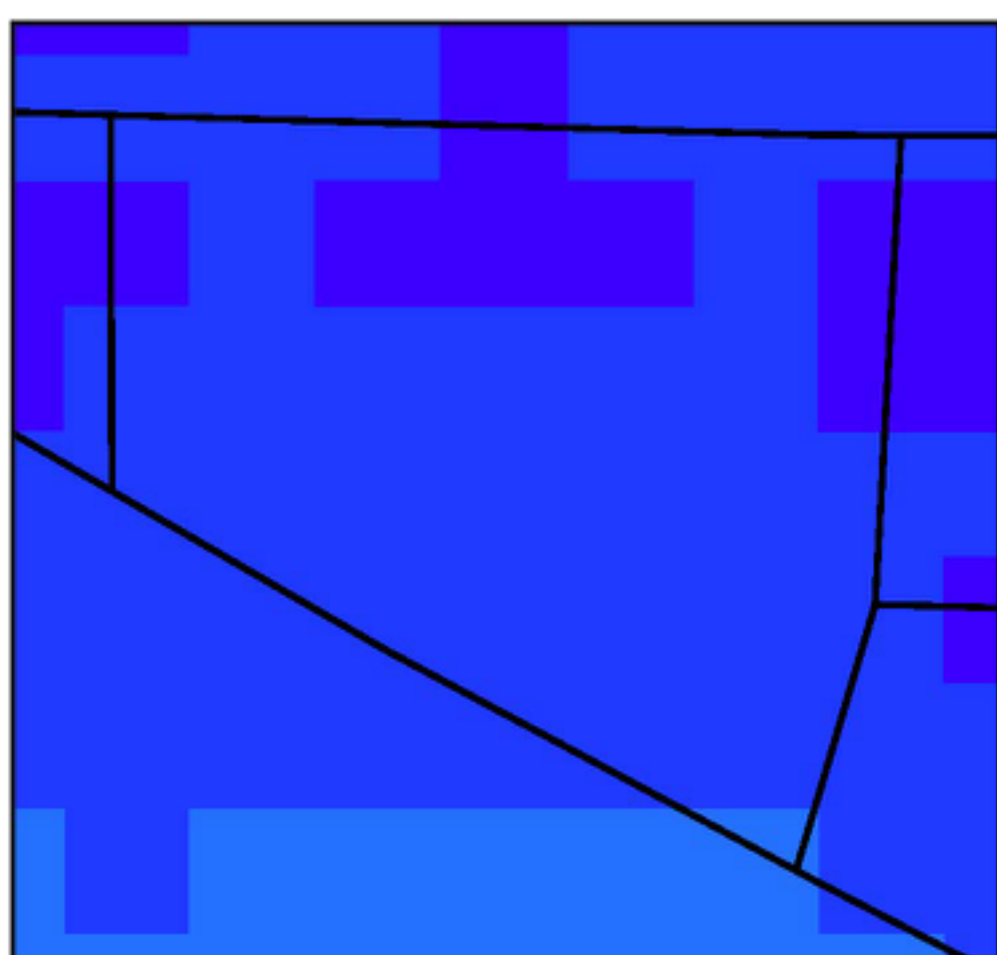
891305293079 Sales 72-E-7D

Flood Maps - effective Dec 21, 2018



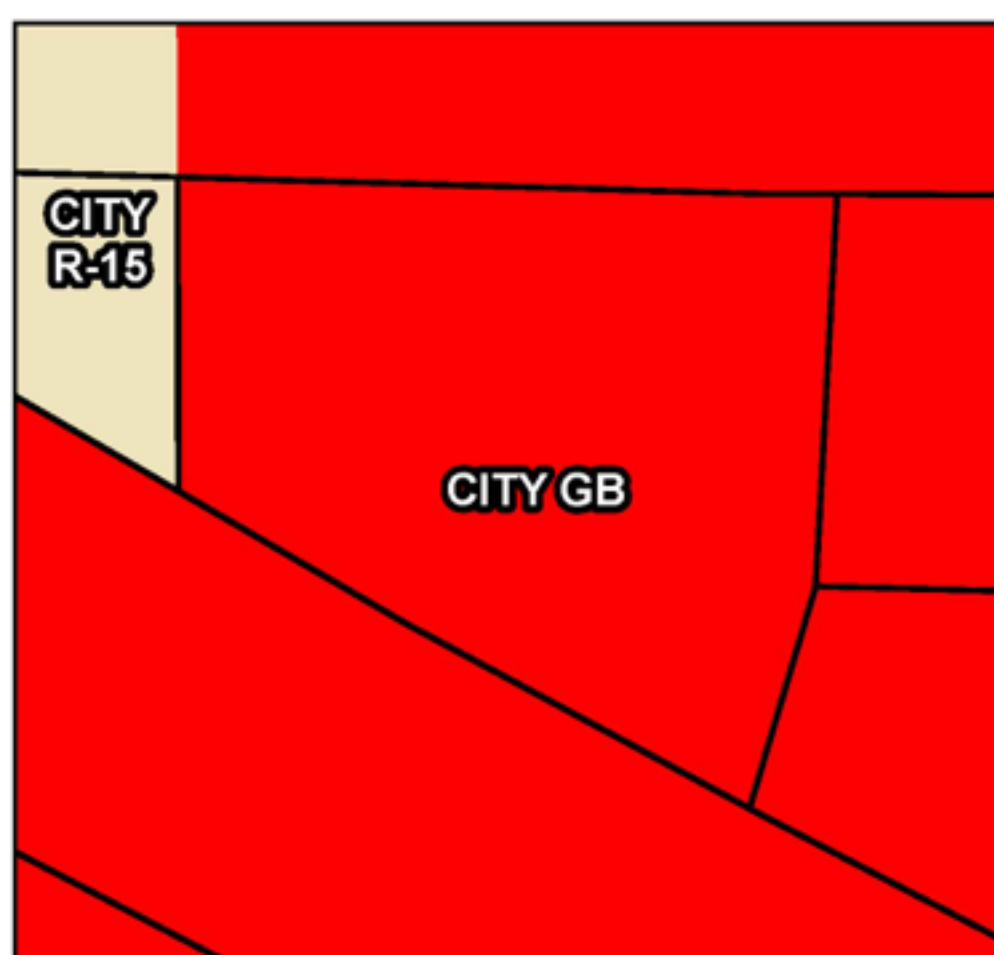
891305293079 FLOOD 72-E-7D

Elevation

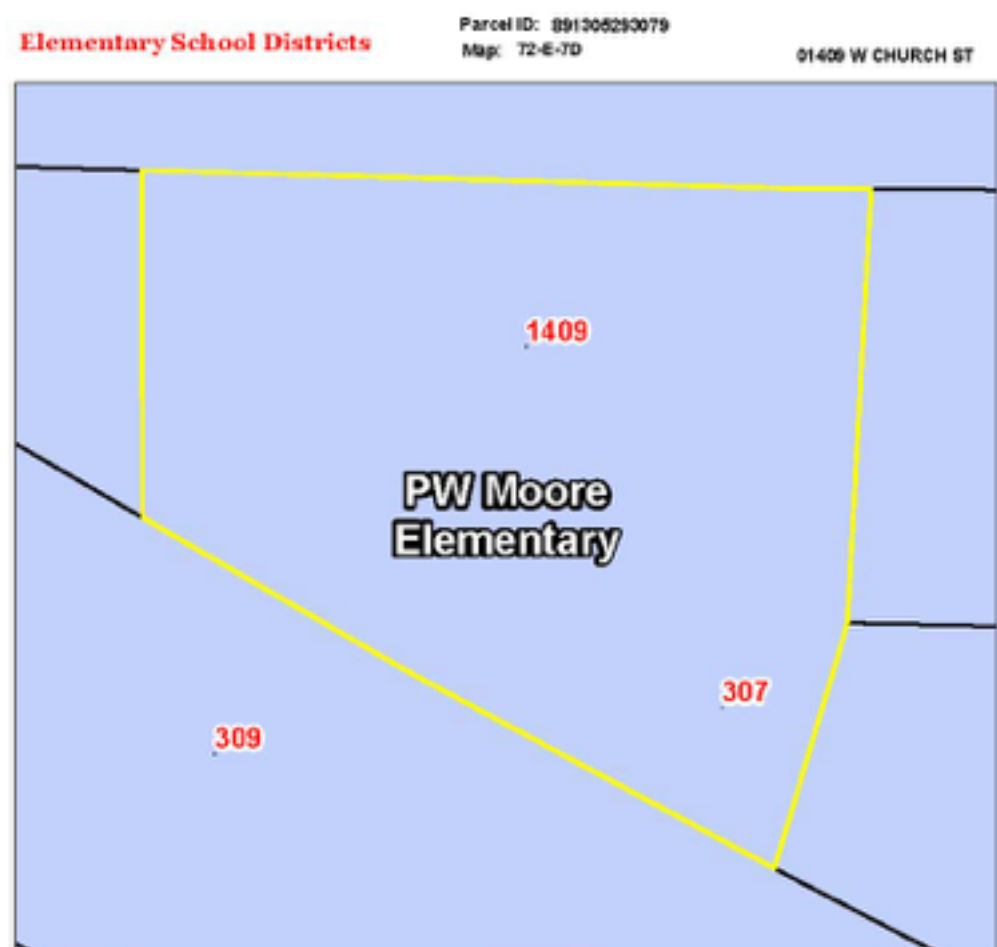


891305293079 Elevation 72-E-7D

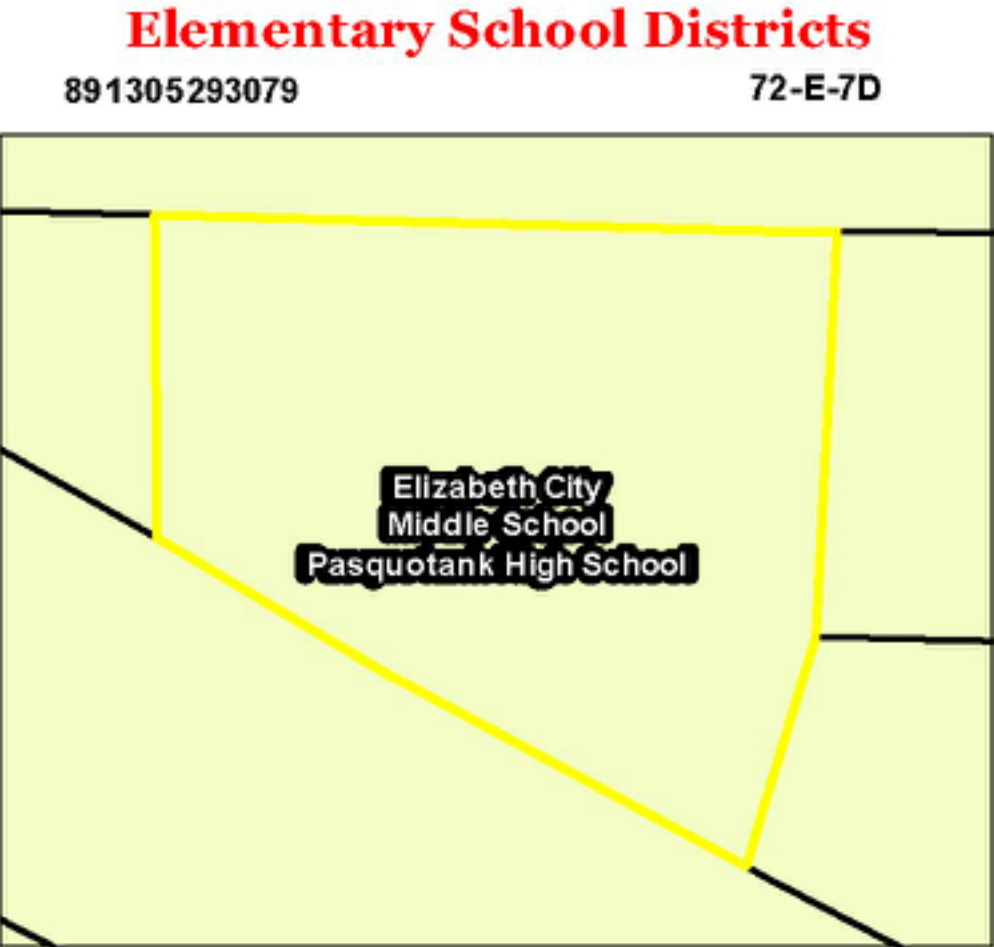
Zoning



891305293079 Zoning 72-E-7D



891305293079 PW Moore Elementary 72-E-7D



891305293079 Elizabeth City Middle School Pasquotank High School 72-E-7D

Historic Imagery

- [1996](#)
- [2003](#)
- [2003 Post-Isabel](#)
- [2008](#)
- [2010](#)
- [2012](#)
- [2016](#)